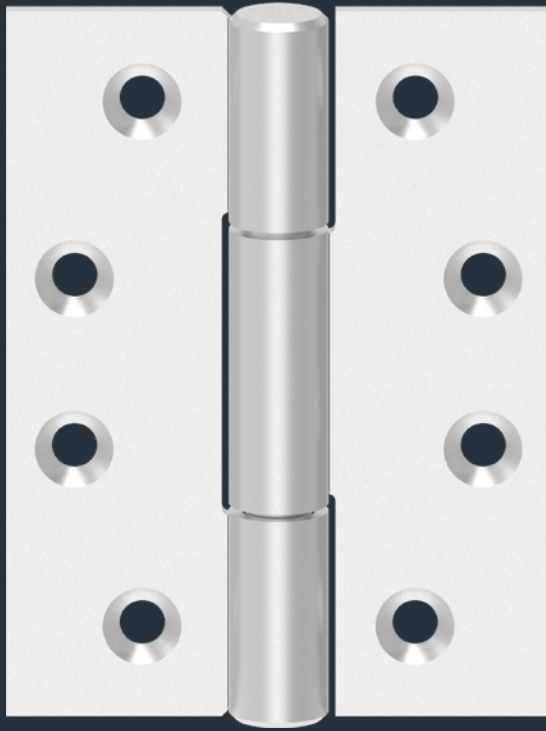


OBN-14-E-C

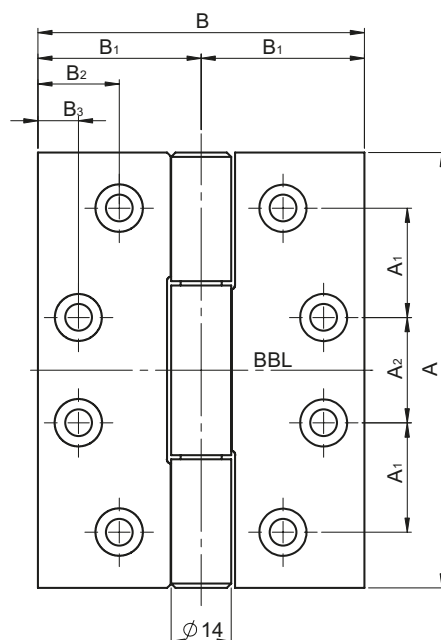


**Performance criteria**

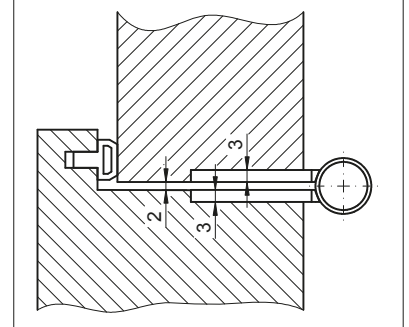
Ø knuckle		14 mm
Material thickness		3 mm
Screws		M5 x 16
DIN-L / DIN-R		Yes
Hole pattern	C-shape	Yes
	Z-shape	-
Door types	Rebate	-
	Flush	Yes
Frame types	Wooden	Yes
	Steel	Yes
Suitable for fire doors	<b>F</b>	Yes
Load-bearing class 14	<b>EN 1935</b> <b>CE</b>	Yes
Door weight	according to standard	160 kg
Material	Stainless steel (ER)	Yes
Finishes	ER matt brushed	Yes
	ER polished	-
	PVD coating	■
	Powder coating in RAL shades	■

■ Yes - No ■ On request

**Dimensional drawing**



**Cross-section**

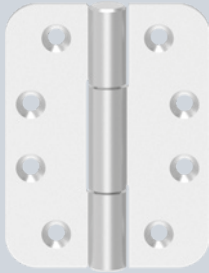




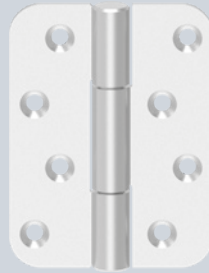
ECO

Object hinges Horizon ■ OBN-14 ■ For flush doors ■ Rectangular ■ C hole pattern

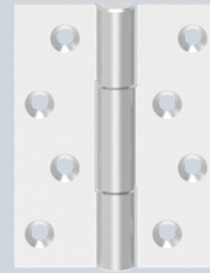
PRODUCT FAMILY ■ FOR FLUSH DOORS



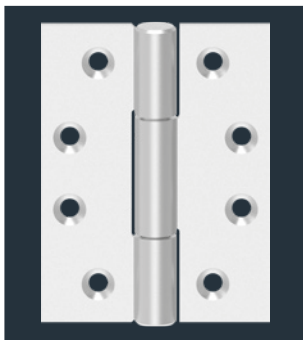
OBN-14-R-C round C hole pattern



OBN-14-R-Z round Z hole pattern



OBN-14-E-Z rectangular Z hole pattern



**Description**

**ECO Horizon object hinge OBN-14-E-C rectangular C hole pattern**

- For flush doors on wooden and steel frames
- Concealed, fixed axis
- Patented wear- and maintenance-free ball bearing technology for absorbing radial and axial forces
- Suitable for use on FS doors
- DIN left/DIN right, can be used without conversion work
- Invisible axle connection (without cover head)

**F** **EN 1935** **CE** **ER** Wooden door Steel door

OBN-14-E-C rectangular C hole pattern For flush doors	Dimensions A x B inch	Dimensions A x B inch	A <sup>1</sup> mm	A <sup>2</sup> mm	B <sup>1</sup> mm	B <sup>2</sup> mm	B <sup>3</sup> mm	Art. no.
OBN-14-4030-E-C.ER	4 x 3 inch	101.6 x 76.2 mm	25.5 mm	24.6 mm	38.1 mm	19 mm	9.5 mm	5030047531
OBN-14-4035-E-C.ER	4 x 3.5 inch	101.6 x 88.9 mm	25.5 mm	24.6 mm	44.45 mm	19 mm	9.5 mm	5030047532
OBN-14-4040-E-C.ER	4 x 4 inch	101.6 x 101.6 mm	25.5 mm	24.6 mm	50.8 mm	19 mm	9.5 mm	5030047533
OBN-14-4540-E-C.ER	4.5 x 4 inch	114.3 x 101.6 mm	28.6 mm	31.3 mm	50.8 mm	25.4 mm	9.5 mm	5030048013
OBN-14-5030-E-C.ER	5 x 3 inch	127 x 76.2 mm	31.75 mm	37.7 mm	38.1 mm	19 mm	9.5 mm	5030048015
OBN-14-5035-E-C.ER	5 x 3.5 inch	127 x 88.9 mm	31.75 mm	37.7 mm	44.45 mm	25.4 mm	9.5 mm	On request
OBN-14-5040-E-C.ER	5 x 4 inch	127 x 101.6 mm	31.75 mm	37.7 mm	50.8 mm	25.4 mm	9.5 mm	5030048019
OBN-14-5050-E-C.ER	5 x 5 inch	127 x 127 mm	31.75 mm	37.7 mm	63.5 mm	25.4 mm	9.5 mm	5030048023

**ECO Schulte GmbH & Co. KG**

Iserlohner Landstraße 89

D-58706 Menden

Telephone +49 2373 9276 - 0

Telefax +49 2373 9276 - 40

[info@eco-schulte.de](mailto:info@eco-schulte.de)

[www.eco-schulte.de](http://www.eco-schulte.de)

Our compendium represents a compilation of all products from our range of services. These are subject to different delivery classes. Special variants included are often manufactured to customer specifications and sometimes require longer delivery times and minimum purchase quantities. Further advise can be given by your contact person.

## ■ SYSTEM TECHNOLOGY FOR THE DOOR

