





ECO

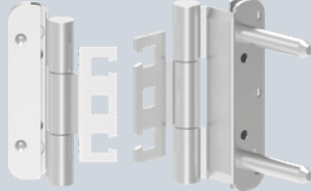
### Hinge with RC-B hole pattern

#### Standard



OBX-18-1532/120-FD-RC-B

#### With load-bearing stud (TZ)



OBX-18-1532/120-FD-RC-B TZ

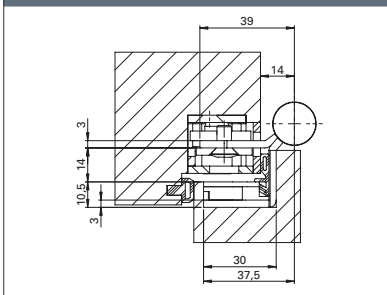
### Description

#### ECO Horizon object hinge OBX-18-1532/120-FD-RC-B

- For rebated soundproof doors on wooden, steel or aluminium frames
- For OBX frame boxes adjustable in three dimensions
- Concealed, permanently mounted rotating axis, so no pin fixation required

- Wear- and maintenance-free ball bearing technology for absorbing radial and axial forces
- Perfectly closed hinge knuckle without cover head
- Suitable for burglar-resistant elements
- Suitable for use on FH doors
- DIN left/DIN right, can be used without conversion work
- EN 1935: 14 / 160 kg

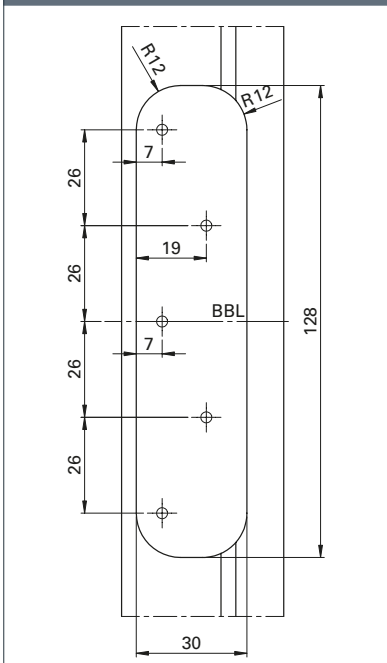
#### Cross-section standard



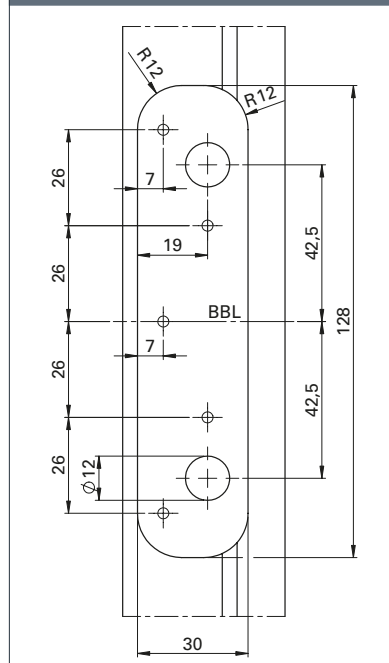
**F** **EN 1935** **CE** **ER** Wooden door

OBX-18-1532/120-FD-RC-B For rebated doors	Dimensions	Art. no.
OBX-18-1532/120-RC-B ER	Ø 18 x 120 mm	5030054323
OBX-18-1532/120-FD-RC-B TZ ER	Ø 18 x 120 mm	5030055305

#### Milling pattern standard



#### Milling pattern load-bearing stud (TZ)



**ECO Schulte GmbH & Co. KG**

Iserlohner Landstraße 89

D-58706 Menden

Telephone +49 2373 9276 - 0

Telefax +49 2373 9276 - 40

[info@eco-schulte.de](mailto:info@eco-schulte.de)

[www.eco-schulte.de](http://www.eco-schulte.de)

Our compendium represents a compilation of all products from our range of services. These are subject to different delivery classes. Special variants included are often manufactured to customer specifications and sometimes require longer delivery times and minimum purchase quantities. Further advise can be given by your contact person.

## ■ SYSTEM TECHNOLOGY FOR THE DOOR

